



LETTER FROM THE PRESIDENT

In April our Program chairs took EWI out to the ballgame! We took over Principal Park, home to our beloved Iowa Cubs, and got quite the backstage pass to the locker rooms and behind-the-scenes of operations. Jana Daisy also joined us again this year selling ducks for YESS. Hopefully one of you is the

lucky winner! Our new Marketing chair, Sharon Porter, did a great job capturing the night on our Facebook page. Make sure you head over there and check out the recap. And, if you haven't yet, make sure to 'Like' EWI of Des Moines on Facebook so you can be up-to-date on all our happenings.

Our May event is sure to be a treat as well. We will be taking over Artisan Gallery 218 in Valley Junction. You don't want to miss this unique space and time to shop with all your EWI friends! We also will have some guests from overseas, so please make them feel welcome. They are on a special tour in Iowa for women in leadership and want to learn what EWI is all about and how we are impacting our Des Moines community.

Reminder that flower sales pick-up is Friday, May 3rd at 4:40 at In the Bag. There is a need for volunteers from 2:30-4:30 that day to sort orders. Please let Cindy Fleischacker know if you are available to help.

One of my 'EWI Soapboxes' has always been LCAM. Attending early on in my EWI career helped me to catch the vision and I've served on the board or a committee ever since. That's why I keep mentioning it--no excuse for you not to know the dates and see if there is any way you can attend! LCAM 2017 is Sept. 21-23 in Dallas, TX...we have chapter grant money to assist you. Talk to me about specifics.

In Collaborative EWI Spirit,
Tara E. Nagel, Chapter President
Representing TEN Consulting



2016-2017 Board

President

Tara Nagel
TEN Consulting
Tara.Ann.Ely@gmail.com

Vice President

Katherine McClure
Katherine McClure Photography
km@katherinemcclure.com

Secretary

Beth Kneeskern
KPMG LLP Accounting
bkneeskern@kpmg.com

Treasurer

Jessinda Madonia
Bankers Trust
jmadonia@bankerstrust.com

Sergeant-at-Arms

Marla Wylie
Delta Dental
mwylie@deltadentalia.com

Marketing Director

Sharon Porter
Delta Dental
sporter@deltadentalia.com

Program Directors

Courtney Hill
Premiere Credit Union
courtneyh@premiercu.org

Cyndi Lorenzen
Iowa Events Center
clorenzen@iowaeventscenter.com

Communications Director

Christine Healy,
TPI - The Printer Inc.
chealy1142@gmail.com

Retention & Recruitment

Karen Andersen, UnityPoint
Health -
DSMkaren.Andersen@UnityPoint.org

Fundraising Director

Cindy Fleischacker,
Coldwell Banker-
Mid America Group Realtors
cconierge@cbdm.com

APRIL 2017 BOARD MEETING RECAP

Secretary: There were no changes to the March 9, 2017 board minutes. A motion to approve the March 9, 2017 Board minutes was made by Christine Healy and seconded by Sharon Porter with no objections.

Treasurer: Financials were provided through February 28, 2017. Discussion held. A motion to approve the Treasurer's report, including payment of up to \$600 to Iowa Cubs for the April 3, 2017 event, \$268 for EWI insurance and filing fees and \$138.86 to Plaza Florist for Christine Healy and Gwen Elsasser's flowers, was made by Karen Andersen and seconded by Cindy Fleischacker with no objections.

President: Communications/Meetings: Arranged dinner for corporate board and attended with Christine Healy; e-mailed with Cyndi and Jessinda to make sure Cyd's Catering got paid; drafted President's note for newsletter; received chapter insurance from corporate, forwarded to Jessinda and asked her to bring to April meeting to ensure payment; e-mailed with Christine about the newsletter placement for Jana and Ducks; e-mailed with Karen Fitch about Purely Social idea; prepared April board agenda and President's Report; confirmed with Kat that she could run board meeting on April 3rd; e-mailed with Beth and Christine to make sure minutes are all prepared for approval (if quorum) at April meeting.

Vice President: General notes: Met Chris Harvey after the EWI board meeting and signed the check that was needed; put together the March Board Packet and e-mailed it to Tara Ely.

Sergeant-at-Arms: As of April 3, 2017, the Des Moines Chapter of EWI consists of: 35 member firms, 41 representatives, 8 chapter life members, and 2 sustaining members. Present at the March 9, 2017 Chapter meeting were: 19 member firms for 54% representation, 22 representatives for 54% attendance, 1 chapter life member, 1 sustaining member, 0 transitional members and 9 guests. Attendance of the Board Members at the March 9, 2017 Board Meeting was 50%. Reservation deadline for April 3, 2017 meeting: Friday, March 24, 2017. Board Members: please remember to sign in at the hospitality table!

Marketing: Total likes for Facebook page in March was 186. Activity: attended March 9 meeting at Syverson Stregé & Co.; posted photos from March 9 firm night; prepared board report for April board meeting.

Retention and Recruitment: Membership as of April 3, 2017: 35 member firms, 41 representatives, 8 chapter life members, and 2 sustaining members; Recruitment Activity: Following up with Jan Henderkott, YMCA; Jody White, Dress for Success Des Moines; and Amy Gochanour, A Plus Automotive.

Program: The May EWI event will be held on Monday, May 1, 2017 at Artisan Gallery 218 located in Valley Junction. Address: 218 5th Street, WDM. The order of events will be as follows: 4:15-5:15 Board Meeting; 5:15-5:45 Socialize; 5:45-6:00 Member Spotlight: Katherine McClure; 6:00-6:30 Artisan Gallery 218 presentation; 6:30 -6:45 EWI Updates; 6:45 Shop

Menu will be as follows: bite sized chicken parmesan; stuffed mushrooms; spinach artichoke dip; cheeseball and crackers; hummus and pita points; trio of pinwheels; fruit kabobs; and brownie platter

Fundraising Committee: Our order for the Spring Flower Sale is due to Central Iowa Floral on April 5. We will report on our total at the April meeting. Prices did increase by a small margin this year for some items. The pickup will be at In the Bag on May 3 from 4:30-6 and it would be helpful to have at least 10 ladies at 2:30 to sort the flowers for pick up. We will require emails to be sent out in April requesting this assistance. Last year our profit was \$2,324.90. Total sales thus far are \$6,285 which is an increase of \$93. As there is a minimum on some of the plants/flowers, we will be looking for people interested in purchasing them.

Communications: I attended board and chapter meetings on March 9, 2017. The rest of the corporate board was also in attendance for both meetings. Chapter website duties accomplished: 1) updated meeting information and added announcement about the spring flower sale; 2) prepared and sent emails for April meeting and reminder per President's instructions; 3) prepared newsletter for website; 4) sent reminders about the annual spring flower sale; and 5) worked with representatives updating their profiles on our chapter website. The April 2017 newsletter was sent to membership on Tuesday, March 21, 2017. StarChapter sent me the documents to change the level of service. I will have some training when we start the lighter version. Other activities: 1) attended the Downtown Lunch Bunch at Noodle Zoo on March 23, 2017; 2) sent email to Amy Gochanour of A Plus Automotive. Deadline for the next Connect newsletter is Friday, April 7, 2017. If you have information you would like to include in the newsletter, please send it to Christine Healy (chealy1142@gmail.com). As Corporate Secretary/Treasurer it is my responsibility to upload board meeting and chapter meeting minutes. All minutes for our chapter from October-January 2017 and newsletters from October-April 2017 have been uploaded. I updated my profile on MemberZone. It is now at 100% completion. I suggest our chapter have a tutorial with our representatives to help them get affiliated with the site and update their profiles. We need to establish an email for all corporate communications to our chapter president and vice president. I suggest ewidsmoines@gmail.com. We must finalize this decision and send to corporate office. Chris Harvey and I are working together on chapter's proposed Standing Rules and bylaw changes.

Other Business:

Old Business

No old business.

New Business:

MemberZone – discussion was held on how to navigate.



MEMBER SPOTLIGHT



Katherine McClure Photography was founded on a love of photography. I knew I wanted to be a photographer when I was only 12! But I can now see clearly that the real motivation behind that love of imagery was storytelling. I've been a photographer for 24 years and in business for 14, but the last two years since finding Moment Design have been by far the most rewarding. Moment Design is all about creating a unique environment for emotional photographic experiences. I am now exploring way past 'pretty pictures' and am creating meaningful art portraits that celebrate relationships. The principles aren't just applied in my work with couples, but have changed the way I approach families, and especially extended family sessions. The most enjoyable aspect of my job is hearing people's stories! I can bring all my education, technique training, and skills, but the individuals who choose to share their lives with me are what make my portraits gorgeous.

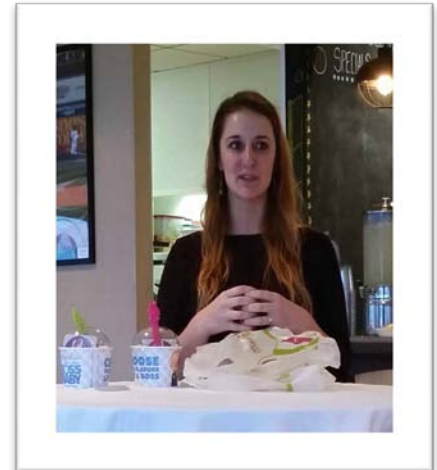
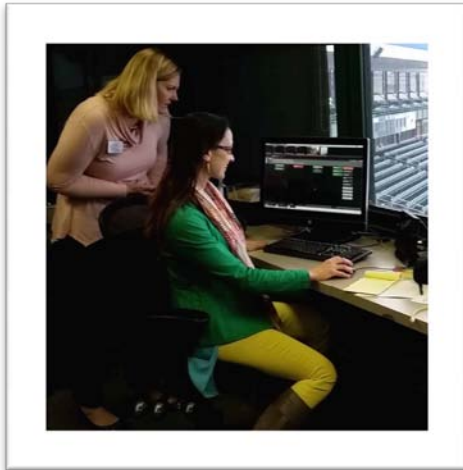
I am celebrating 15 years of marriage to Matthew this summer, and we have four kids so far. Lorien (10), Leighton (9), Graiden (7,) and Tiernan (5.) We are a licensed foster care family and we have recently begun offering respite services. Fostering has already deeply changed our lives for the better and we've seen beautiful growth in our kids as well. Matt is a pastor at Christian Reformed Church in Prairie City and I homeschool all our children. We want our children to know that learning and serving are lifelong endeavors. We strive to live out that example in our professional fields and by giving of our time and resources.

Outside of photography, I most enjoy baking. Pies are my specialty but I've recently begun creating handmade truffles. I am hoping to live vicariously through my son who has big plans for a bakery! He has access to all my recipes to help him get started selling at our local Farmers Market this summer. I grew up in Southwest Florida, so whenever anyone thinks my clothes are a little loud, I laugh inside. I was strongly influenced by Miami fashion and I hold so much back in this Midwest culture! I love to show my personality and truly do try to dress like Skittles (Dress the Rainbow!), but I choose much more conservative fabrics and cuts since relocating here.

Erin Ort invited me to donate to a portrait session to an auction a few years ago and then contacted me to see if I would like to come to a meeting. It was the right invitation at the right time, as I was looking for ways to increase my networking in Des Moines. The relationships formed at EWI have impacted the way I viewed the Central Iowa region, and were a huge influence in my joining the Greater Des Moines Leadership Institute's Class of 2017. The long term commitment to EWI lead me to an amazing growth opportunity I would never have known about, or pursued if I hadn't been invited to serve on the board here.

APRIL 2017 CHAPTER EVENT

EWI of Des Moines' April event was held at the Cub Club. We were treated to a guided tour.



EWI OF DES MOINES FUNDRAISING

Wednesday, May 3 is the pick-up day for the EWI Flowers. We need assistance beginning at 2:00 to sort the flowers. Please contact Cindy Fleischacker via email to volunteer for the afternoon: Concierge@CBDSM.com. A BIG thank you goes out to everyone who sold flowers and to IN THE BAG for allowing us to use their facility on pick-up day!!

EWI OF DES MOINES SCHOLARSHIPS

The 2017 ASIST Scholarship is open for applications! This program, which aligns with all of our core tenants: Connections, Careers, and Community, awards scholarships to Adult Students in Scholastic Transition. It is open to adults 18 and over who reside within the boundaries of our Chapter: Polk, Dallas, Story, and Warren counties. The application can be found on the front page of our website, www.ewidsm.org. We encourage you to share the information with your business and personal connections. The application due date is **May 12th**, 2017. Please direct any questions to Sarah Roeder, 2017 ASIST Committee Chair.

Thank you for your support of this important program!

FIRMS IN THE NEWS

TMG sold to Co-Op Financial Services

The Iowa Credit Union League has sold its majority interest in its Clive-based payments processing company, TMG, to CO-OP Financial Services. As part of the \$100 million transaction, CO-OP Financial Services has agreed to keep TMG's 550-person workforce in place in Iowa for the next seven years.

CO-OP Financial Services, which is based in Rancho Cucamonga, Calif., is the largest credit union-owned electronic funds transfer network in the world, processing 3.2 billion such transfers and shared branch transactions annually for its 3,500 credit union members. The company had been a minority owner of TMG for the past five years, and with the transaction acquired all of the remaining shares of TMG from the Iowa Credit Union League. *Business Record April 3, 2017*

UnityPoint Health - Des Moines to dedicate donor 'Wall of Heroes'

UnityPoint Health-Des Moines has partnered with the Iowa Donor Network and Iowa Lions Eye Bank to unveil a Wall of Heroes to kick off National Donate Life Month in April. The wall is a permanent art installation that represents the legacy created by those who give the ultimate gift of organ, tissue and eye donation. An interactive touch screen will share the stories of adult and pediatric donors at Iowa Methodist Medical Center, Blank Children's Hospital, Iowa Lutheran Hospital and Methodist West Hospital. The multidimensional art piece was funded primarily through a gift from My Angel Foundation. Approximately 65 percent of adults are registered donors in Iowa. Still, nearly 120,000 people nationally are waiting for a lifesaving organ transplant; almost 700 of those are in Iowa. A reception will be held Thursday, March 30, in the Iowa Methodist Medical Center atrium. A short program will be held at 6 p.m., followed by a blessing and then the unveiling of the art piece. *Business Record March 28, 2017*

Coldwell Banker Mid-America Group, Realtors has been ranked number 309 in sides and 469 by volume in the nation in 2017 by the REAL Trends 500. Coldwell Banker Mid-America Group, Realtors is an Iowa based member of Coldwell Banker Real Estate Corporation, and the REAL Trends 500 is the leading report ranking the performance of the top residential real estate brokerage firms.

The Des Moines Register April 6, 2017



Join us in celebrating our community.
We're simply better together.

2017

Celebration Luncheon & Report to the Community

Thursday, May 4 | Networking: 11:30 a.m. - Noon
Program: Noon - 1:15 p.m.

Community Choice Credit Union Convention Center Ballroom | 833 5th Avenue
COST: \$30 | RSVP ONLINE at www.desmoinesfoundation.org/events
or call 515.883.2626 for more information.

Parking is available north of the convention center or along the street.

2017 LUNCH BUNCH

3RD TUESDAY & FOLLOWING THURSDAY OF EACH MONTH WEST DES MOINES & DOWNTOWN LOCATIONS

Date 11:30 am	West Des Moines Meets on Tuesdays	Downtown Meets on Thursdays
May 16&18	<u>Cool Basil</u> 1250 - 86 th Street, Clive 225-8111	<u>Adong's</u> 1511 High St., D.M. 284-5632
June 20&22	<u>Coach's Pizza</u> 560 S. Prairie View, WDM 223-2233	<u>Café Baratta's in the Historical Building</u> 600 E. Locust Street, D.M. 281-3294
July 18&20	<u>Bar Louie</u> 7105 Mills Civic Parkway, WDM 422-9640	<u>Tacopocalypse</u> 407 E. 5 th St., D.M. 556-0571
August 15&17	<u>Wellman's</u> 597 Market Street, WDM 222-1100	<u>Magnolia Wine Kitchen</u> 313 E. Locust Street, D.M. 635-0952
September 19&21	<u>Bravo</u> 120 S. Jordan Creek Parkway, WDM 225-0660	<u>Guru BBQ</u> 300 W. MLK Jr. Pkwy., D.M. 777-2500
October 17&19	<u>Urban Grill</u> 3651- 86 th Street, Urbandale 278-1016	<u>+39</u> 1430 Locust St., D.M. 421-4500
November 21& 23	<u>Waterfront</u> 2900 University Avenue, WDM 223-5106	<u>Centro</u> 1003 Locust St., D.M. 248-1780
December 19&21	<u>Club Car</u> 13435 University Avenue, Clive 226-1729	<u>Court Avenue Brewing Company</u> 309 Court Avenue, D.M. 282-2739

BLUE RIBBON FOUNDATION SEEKS SUPPORT

What a Ride truly expresses a day at the great Iowa State Fair! Beelining for a favored food booth, coasting through a building of exhibits and twirling through the Midway - it's all a whoosh of fun. In celebrating the Iowa State Fair Blue Ribbon Foundation's 25th anniversary, we have to say it's been quite the ride as well, as we've raised funds for more than 40 renovation and improvement projects throughout the Fairgrounds.

Can't wait for that electricity to get flowing? Join us in a whirl of fun at our 21st annual [Corndog Kickoff Benefit Auction & Fair Food Grazing Party](#) on Saturday, July 8, 2017. The expanse of the Varied Industries building will feature auction packages, food and entertainment with a Midway vibe. Two thousand people attended the 2016 Corndog Kickoff. It's truly a party you don't want to miss! **Opportunities to participate include donating to the auction or becoming an event patron.** Would you firm consider donating in support of one of our state's oldest and grandest traditions? For more information, please contact Robin Taylor at Robin@BlueRibbonFoundation.org.

CALENDAR OF EVENTS

Tuesday, May 16 – Lunch Bunch West

11:30 a.m. – 12:30 p.m. Cool Basil – 1250 - 86th Street, Clive– 225-8111

Thursday, May 18 – Lunch Bunch Downtown

11:30 a.m. – 12:30 p.m. Adong's – 1511 High St., Des Moines – 284-5632

Friday, April 21 – Reservation Deadline for May Meeting

Make sure to register for the April meeting at www.ewidsm.org. Questions about payments? Please contact Marla Wylie at mwylie@deltadentalia.com or 263-2802.

Future EWI of Des Moines event to put on your calendar

Monday, June 5, 2017 Louie's Wine Dive, The Printer Inc. Firm Night

HAPPY BIRTHDAY!!

Karen Andersen	UnityPoint Health – Des Moines	May 2
Marsha Todd	Faegre Baker Daniels LLP	May 5
Keisha Knepper	Iowa Credit Union League	May 9
Barb Hobson	Community Foundation of Greater Des Moines	May 11
Julie Mapes	Iowa Credit Union League	May 20
Laura Montgomery	Hubbell Realty Company	May 20
Chris Harvey	Iowa Credit Union League	May 26
Amanda Grimm	Embassy Suites Des Moines Downtown	May 27



[Find EWI Des Moines on Facebook](#) 

YESS DUCK DERBY 2017

The YESS Duck Derby is back for its 10th year as the most spec-quack-ular event in Central Iowa. You are invited to “adopt a duck” to help kids in our community then join the fun on Saturday, May 6th at the Jordan Creek Town Center. Proceeds of this family-fun event support the thousands of children who count on Youth Emergency Services & Shelter (YESS) each year.

The fun starts at Noon, when you can enjoy free family-friendly entertainment and then at 2:00pm, the thousands of “adopted” yellow rubber ducks will race through the lake, all vying to cross the finish line first and be named Top Duck. You can adopt your ducks and cheer them on to victory and the chance to win fantastic prizes! The full list of prizes is available at [YESSDuckDerby.org](http://www.duckrace.com/desmoines/faq), or check out their FAQ page (<http://www.duckrace.com/desmoines/faq>) for all the ducky details.

Adopt a Duck. Help a Child.

Your duck adoption helps kids in our community find shelter, safety and care when they need it most.

- Adopt a Duck (1) - \$5.00
- Adopt a “Six Quack” (6) - \$25.00
- Adopt a “Quackers Dozen” (12) - \$50.00
- Adopt a “Flock” (25) - \$100.00

About YESS

As Iowa’s largest provider of emergency services for youth - newborn through age 17 - YESS touches the lives of 2,000 children per year through a range of programs designed to keep kids safe and help families thrive. YESS’ network of services include Iowa’s largest and most comprehensive youth shelter as well as crisis nursery care, crisis intervention and stabilization, mental health counseling, and care coordination. Learn more about how YESS connects kids with brighter futures by visiting YESSIowa.org

It’s time to get quackin’! Visit www.YESSDuckDerby.org to adopt a duck and help a child!



**TOMORROW IS COMING!
ARE YOU READY?**

Join us for breakfast and our FREE seminar:
BUSINESS SUCCESSION PLANNING
Network with your peers and gain valuable strategic information!

THURSDAY, APRIL 27, 2017
West Des Moines, Iowa

This presentation is part of our three month breakfast series,
“Financial Planning for Professionals and Business Owners.”
More information at OnlyWorkForYou.com/insights/events

Sponsored by:



4125 Westown Parkway, Suite 104, West Des Moines, Iowa – Call 515-225-6000 and ask for Tom



September 21–23, 2017
LEADERSHIP CONFERENCE & ANNUAL MEETING

Grapevine, TX (Dallas Area)

\$575 - Early Bird Registration - until June 15
\$625 - Regular Registration - June 16–Aug 15
\$700 - Late/On-site Registration - Aug 16–Sept 21
\$100 - Leadership Caucus

Registration opens mid-April

May 19–20, 2017
Kentuckiana Board Forum

Save the date! More information will be provided soon.
Organized by Christy Smallwood and Virginia Hart.

June 9–10, 2017
Texoma Board Forum

Hilton Palacio Del Rio Hotel, Located on the San Antonio Riverwalk | EWI rate \$150/night

Join us Friday night for a traditional Mexican dinner,
followed by a Cocktail Cruise on our famous river barges.

More details to come!

EWI Board / Committee Assignments 2016-2017

<p><u>Advisor</u> Carmella Heckard</p> <p><u>Official Greeter</u> Tara Nagel</p> <p><u>Nominating</u> Carmella Heckard Tara Nagel Kat McClure</p> <p><u>Budget</u> Jessinda Madonia Tara Nagel Kat McClure</p> <p><u>Bylaws</u> Carmella Heckard Tara Nagel Kat McClure</p> <p><u>Investments</u> Chris Harvey - Chair Tara Nagel Paula Leverenz – non EWI Donna Schletzbaum – non EWI Michelle Morris – non EWI</p> <p><u>Philanthropy</u> Deb Longseth -Chair Laura Montgomery Marty Kennedy Judy Jones Deanne Monson Laveta Pfaltzgraff</p> <p><u>Scholarship/ASIST</u> Sarah Roeder – Chair Michelle Cook Gloria Criswell Donna Schletzbaum – non EWI Michelle Morris – non EWI Paula Leverenz – non EWI</p>	<p><u>Past Presidents Advisory Council</u></p> <p>Carmella Heckard Chris Harvey Paulette Schultz Christine Healy Barbara Eslick Cindy Fleischacker Michelle Cook Sarah Roeder Ruth Hanrahan Sheryl Nichols Laveta Pfaltzgraff Kim Fankhauser Judy Jones Judy Smith Linda Buchanan Marsha Rodd Mary Granneman Nancy Cook Karen Bailey Janette House Lena Rocha</p> <p><u>Hospitality</u> (reports to Program) Keisha Knepper – Chair Deanna Dunn Marsha Rodd Linda Buchanan Sharon Porter Julie Mapes</p> <p><u>Purely Social</u> (reports to Program) Karen Fitch-Chair Barb Hobson Christy Jones Ruth Hanrahan Carol Bahls</p> <p><u>Parliamentarian</u> Nancy Cook</p> <p><u>Lunch Bunch</u> Judy Smith – WDM Paulette Schultz - Downtown</p>	<p><u>Fundraising**</u> Cindy Fleischacker – Chair Judy Smith Debbie Belieu Paulette Shultz Kim Bence Corinna King Debra Lyons</p> <p><u>Communications**</u> Christine Healy – Chair Aisha Syed Jana Morgan Robin Taylor Kim Crocker Anna Doud</p> <p><u>Program**</u> Courtney Hill-Co-Chair Cyndi Lorenzen – Co-Chair Kim Fankhauser Mary Ann Moore Lena Rocha</p> <p><u>Recruitment/Retention**</u> Karen Andersen – Chair Sheryl Nichols Karen Bailey Mary Granneman Janette House Amanda Grimm</p> <p><u>Marketing**</u> Sharon Porter - Chair</p> <p><u>Sergeant at Arms**</u> Marla Wylie</p> <p><u>Treasurer**</u> Jessinda Madonia</p> <p><u>Secretary**</u> Beth Kneeskern</p> <p><u>Vice President**</u> Kat McClure</p> <p><u>President**</u> Tara Nagel</p> <p>** Board Member</p>
--	--	---

CORPORATE INFORMATION

What is EWI?

Mission

Executive Women International (EWI) brings together key individuals from diverse businesses for the purpose of promoting member firms, enhancing personal and professional development, and encouraging community involvement.

Vision

To be a global women's organization of 5,000 engaged members empowering others for positive change.

Values

Integrity | Excellence | Respect | Collaboration

2016-2017 Corporate Officers & Directors

President

Jill Gaffney
Greenleaf Landscaping, Inc.
EWI of Spokane

President-Elect

Cheryl Hawkins
American Clinical Laboratory
Assn
EWI of Washington, D.C.

Secretary/Treasurer

Christine Healy
TPI – The Printer Inc.
EWI of Des Moines

Directors

Darlis Vauble
WoodmenLife
EWI of Omaha

Christina Casiano
Bill Miller Bar-B-Q
Enterprises, Ltd.
EWI of San Antonio

Kim Weprin
Associate Integrated Marketing
EWI of Wichita

Advisor

Dianne Luckett
Irby Electrical Distributor
EWI of Jackson



Proof It! How To Be a Better Proofreader

Presenter: Mandi Stanley

Tuesday, May 2, 2017

3:00 PM EST / 12:00 PM PST

PROFESSIONAL DEVELOPMENT
ewi WEBINARS

Proofreading is a skill ANYONE can learn. Join us to make sure your documents and emails are error free with no embarrassing mistakes. You will learn – and even practice – the following proofreading practices. You will learn:

- First, why any message bearing with your organization's name must be flawless
- How to use the "Newspaper Proof": a fail-safe three-step approaching to proofreading
- How to build your "Proofreader's Power Pack" with indispensable tools and resources
- How to proofread for quality under tight deadlines
- How to proofread in distracting office environments
-

If you're tired of reading over the same document four or five times – and still finding something to change – get ready to laugh and learn with Mandi as she shares her own proofreading horror stories and admonishes everyone to throw away your red pens!

With more than 21 years of experience on the seminar circuit, Certified Speaking Professional Mandi Stanley works primarily with leaders who want to boost their professional image by becoming better speakers and writers. Some of her repeat clients include: Campbell's Soup, United States Air Force, McDonald's US, Nuclear Energy Institute, The Rockefeller University, Kimberly Clark's World Headquarters, and the National Football League (that's right – the NFL). In 2003, Mandi was designated a CSP, Certified Speaking Professional. Fewer than nine percent of all worldwide speakers have earned this designation. She concentrates in English, communication, and management, and served as a faculty member of the American Management Association for five years. Mandi is an award-winning business author of The No-Panic Plan for Presenters.

**EWI® Des Moines Chapter
Monday, May 1, 2017
Chapter Event**

Date:	Monday, May 1, 2017
Program:	Firm Night by Katherine McClure Photography & Artisan Gallery 218 feature
Program Location:	The May EWI event will be held on Monday, May 1, 2017 at Artisan Gallery 218 located at 218 5 th Street in West Des Moines, IA 50265. There is street parking and a few parking lots along 4 th and 6 th Streets.
Schedule:	4:15-5:15 Board Meeting 5:15-5:45 Socializing 5:45-6:15 Dinner at Food Stations 6:15-6:30 Firm Spotlight Presentation 6:30-7:00 Artisan Gallery 218 Presentation 7:00 EWI Updates 7:15 Shop
Menu:	Bite sized chicken parmesan; stuffed mushrooms; spinach artichoke dip; cheeseball and crackers; hummus and pita points; trio of pinwheels; fruit kabobs; brownie platter
Cost:	\$25.00
Dinner Reservation Deadline:	<ul style="list-style-type: none"> • Reservation deadline is Friday, April 21, 2017. • Please remember that all Representatives <i>MUST</i> register on line at http://www.ewidsm.org. • Representatives paying monthly or quarterly <i>MUST</i> complete the form below and mail it along with your check to Marla Wylie <u>by</u> the reservation deadline. • Representatives bringing a guest <i>MUST</i> register the guest online and mail the payment to Marla by the reservation deadline. • <i>Cancellation Policy:</i> If you have registered but are unable to attend, you <i>MUST</i> notify Marla before the reservation deadline in order to receive a refund or credit.
Mail this form to:	Marla Wylie Delta Dental of Iowa 9000 Northpark Drive Johnston, Iowa 50131 515-261-5504 mwylic@deltadentalia.com

Firm: _____

Representatives: _____

Executives/Guests: _____

Amount Enclosed: _____ (Please make check payable to EWI)