



## LETTER FROM THE PRESIDENT

May found us at the Artisan Gallery, 218 in Valley Junction for some shopping! Although I had to be overseas for work, I saw the pictures and can't wait to see what treasures you all purchased! Our VP, Kat McClure, also showed off her gorgeous work as the member spotlight.

Cindy Fleischacker and volunteers did a great job wrapping up another successful year of flower sales. Thanks again to **In The Bag** for hosting the sorting for yet another year.

Our June event takes us to the wonderful Louie's Wine Dive on University. I know many in the group like wine, and they have very good food too! Christine Healy with TPI will be hosting us as well as doing a presentation on GrowthZone. This is a great feature we have to help us stay organized with what is going on within EWI. It would be helpful if you logged in and took a look around prior to the event (If you have any questions, you may reach out to Christine or me and we can assist you). Rumor has it Christine may have us take out our phones and go through it right there too!

The Scholarship Committee led by Sarah Roeder is going strong in its selection process. Please encourage applicants to apply as the date is being extended. Contact Sarah for specifics. And thank you again, to all of you that sold flowers which make our scholarships possible.

LCAM 2017 is Sept. 21-23 in Dallas, TX...we have chapter grant money to assist you. We will have forms at the June meeting. Please e-mail me with any questions you may have. LCAM is a great way to see the vision of EWI, and the conference is shorter this year. So hopefully it will be easier to be away from work and home for a shorter amount of time. Please seek me out; I am happy to discuss my LCAM experiences with you from over the years!

In Collaborative EWI Spirit,  
Tara E. Nagel, Chapter President  
Representing TEN Consulting



### 2016-2017 Board

#### President

Tara Nagel  
TEN Consulting  
[Tara.Ann.Ely@gmail.com](mailto:Tara.Ann.Ely@gmail.com)

#### Vice President

Katherine McClure  
Katherine McClure Photography  
[km@katherinemcclure.com](mailto:km@katherinemcclure.com)

#### Secretary

Beth Kneeskern  
KPMG LLP Accounting  
[bkneeskern@kpmg.com](mailto:bkneeskern@kpmg.com)

#### Treasurer

Jessinda Madonia  
Bankers Trust  
[jmadonia@bankerstrust.com](mailto:jmadonia@bankerstrust.com)

#### Sergeant-at-Arms

Marla Wylie  
Delta Dental  
[mwylie@deltadentalia.com](mailto:mwylie@deltadentalia.com)

#### Marketing Director

Sharon Porter  
Delta Dental  
[sporter@deltadentalia.com](mailto:sporter@deltadentalia.com)

#### Program Directors

Courtney Hill  
Premiere Credit Union  
[courtneyh@premiercu.org](mailto:courtneyh@premiercu.org)

Cyndi Lorenzen  
Iowa Events Center  
[clorenzen@iowaeventscenter.com](mailto:clorenzen@iowaeventscenter.com)

#### Communications Director

Christine Healy,  
TPI - The Printer Inc.  
[chealy1142@gmail.com](mailto:chealy1142@gmail.com)

#### Retention & Recruitment

Karen Andersen, UnityPoint  
Health - DSM  
[karen.Andersen@UnityPoint.org](mailto:karen.Andersen@UnityPoint.org)

#### Fundraising Director

Cindy Fleischacker,  
Coldwell Banker-  
Mid America Group Realtors  
[concierge@cbdsm.com](mailto:concierge@cbdsm.com)

## MAY 2017 BOARD MEETING RECAP

**Secretary:** There were no changes to the April 3, 2017 board minutes. A motion to approve the April 3, 2017 board minutes was made by Katherine McClure and seconded by Courtney Hill with no objections.

**Treasurer:** Financials were provided through March 31, 2017. Discussion held. A motion to approve the Treasurer's report, including payment to In the Bag for the May 1 event meal in the amount of \$619.45, was made by Cyndi Lorenzen and seconded by Courtney Hill with no objections.

**President:** Communications/Meetings: Drafted President's letter for newsletter; arranged American Armenian Women's Leadership and guest arrival with host, emailed with Cindy Fleischacker about flower sales; emailed with Marla about registration for guests and chapter comping (previously board approved); emailed with Courtney and Kat about board meeting location; arranged with Carmella Heckard to run board meeting if I wasn't able to attend due to work trip; emailed with Kat about board packet and Monday night. Coordinated specifics with Carmella.

**Vice President:** General notes: emailed with Program Committee details for Firm Night in May; put together the March Board packet and emailed it to Tara Nagel; met with Jessinda Madonia, Treasurer.

**Sergeant-at-Arms:** As of May 1, 2017, the Des Moines Chapter of EWI consists of: 34 member firms, 40 representatives, 8 chapter life members, and 2 sustaining members. Present at the April 3, 2017 Chapter meeting were: 22 member firms for 63% representation, 26 representatives for 63% attendance, 1 chapter life member, 1 sustaining member, 0 individual members and 9 guests. Attendance of the Board Members at the April 3, 2017 Board Meeting was 90%. Reservation deadline for May 1, 2017 meeting: Friday, April 21, 2017. Board Members: please remember to sign in at the hospitality table!

**Marketing:** Activity: attended April 3 meeting at Principal Park; posted photos from Principal Park; prepared board report for May board meeting. A huge thank you to Kat McClure for taking photos from the Principal Park tour!

**Retention and Recruitment:** Membership as of May 1, 2017: 34 member firms, 40 representatives, 8 chapter life members, and 2 sustaining members; Recruitment Activity: Jody White, Dress for Success Des Moines – mailed packet on 4/19/17; Amy Gochanour, A Plus Automotive – referral from website inquiry – packet mailed on 4/18/17; Faith Hougen – referral by Nancy Cook – mailed packet on 4/18/17; Alyssa Flamm, Nourish, Thrive Live - working on membership – referral from Courtney Hill.

**Program:** Location for June event is Louie's Wine Dive, 4040 University Avenue, Des Moines, Phone: 515.777.3416; agenda is as follows: 5:15 - 6:00 Socialize/order dinner – Cash Bar available; 6:00 - 6:30 Firm Presentation: TPI – The Printer Inc; 6:30 - 6:45 Member Zone presentation; 6:45 - 7:15 EWI Updates ; menu is as follows: Choose from 1 of 3 entrée choices, which are Champagne Fish and Chips (gluten free) - champagne and rice flour battered cod, kohlrabi slaw, Louie's dressing. Served with fries; Gourmet Sinatra Burger – hand pattied certified angus beef, bacon, cheddar, balsamic, tomatoes, green goddess dressing, brioche bun. Served with fries or quinoa salad; and Diablo (can be modified to be gluten free upon request) – penne pasta, creamy arrabbiata, fresh

herbs, green onions, lime sour cream, served with focaccia; dessert is chocolate torte (gluten free) – nutella cocoa, rum butter, cinnamon, whipped cream; beverages choices are water and iced tea; other beverages are available for purchase. Future meeting locations are as follows: July: Business Meeting: Iowa Events Center; August: TBD; September: Executive Night: The Des Moines Embassy Club. Karen Andersen made a motion to approve up to \$900 for June event meal and was seconded by Katherine McClure with no objections.

**Fundraising Committee:** The Spring Flower pickup will be at In The Bag on May 3 from 4:30-6. We have 12 volunteers to help sort the flowers for pick up. Our adjusted sales are: \$5,708.00 plus \$1050.00 from Unity Point's sales. Total sales at this time equal \$6,758.00, and we do have a few extra items to sell on May 3. We lost an order of \$721.00 this year that was placed by one of our very best customers. Last year our sales were \$6,065.25 plus \$1,050.00 from UnityPoint for a total of \$7,140.25. Profit last year was \$2,324.90

**Communications:** I attended board and chapter meeting on April 3, 2017. Chapter website duties accomplished: Updated meeting information and added announcement about our scholarships; updated the About Us page on our website; prepared and sent emails for May meeting and flower pick-up; prepared newsletter for website; updated templates on the website. The May 2017 newsletter was sent to membership on Monday, April 17, 2017. Please let me know if you are not getting this communication. Deadline for the next Connect newsletter is Friday, May 5, 2017. If you have information you would like to include in the newsletter, please send it to Christine Healy (chealy1142@gmail.com). I am preparing for TPI Firm Night in June at Louie's Wine Dive. YESS placed the giant duck balloon at TPI recently. See it on Facebook: <https://www.facebook.com/theprinterinc/>

### **Other Business:**

**Old Business:** No old business.

**New Business:** Executive Night – Date for event is confirmed for September 11 and will be held at Embassy Club Downtown. Nominations for executive of the year should be submitted to Tara Nagel.



## NOMINATE YOUR EXECUTIVE

The Des Moines Chapter is privileged to have an outstanding group of Executives and encourages you to honor your Executive or the Executive of another member firm by nomination him/her for this prestigious award. The annual Executive of the Year Award will be presented to a Des Moines Chapter member firm Executive at our annual Executives' Night on Monday, September 11, 2017.

**AWARD CRITERIA - Note: A nominee does not have to meet all of the award criteria to be considered.**

### Significant Contributions to EWI

- Attends EWI functions - Executives' Night, Firm Nights, and other special events.
- Supports Chapter participation by Representative(s) - permits Representative(s) the necessary time to attend committee meetings/monthly meetings; allows Representative(s) to serve in EWI leadership positions such as Committee Chair, Function Leader, Chapter Board, Corporate Committees or Board
- Supports Chapter projects and scholarship programs with Company services/monetary donations.
- Encourages and supports Representative's attendance at the Leadership Conference and Annual Meeting.
- Has hosted a Firm Night or would be willing to host a Firm Night in the future.

### Significant Contributions to the Community

- Committees and Boards on which the Executive serves/served; leadership role such as Committee Chair, Board Member, President/Chairman.
- Community Leadership in fundraising projects.
- Encourages the firm and employees to support community activities.
- Takes leadership role in business-related organizations (i.e., accounting, real estate, health care, etc.)
- Letters of nomination must be submitted to Tara Nagel on or before July 1, 2017.

## 2017 LUCILLE JOHNSON PERKINS AWARDS

Please be thinking about who our chapter wants to nominate for the following 2017 LCAM Awards:

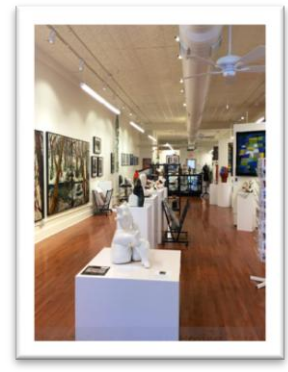
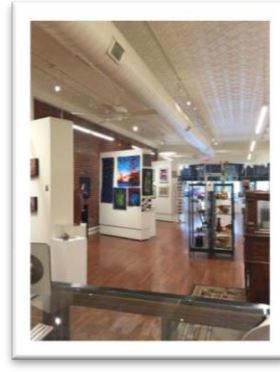
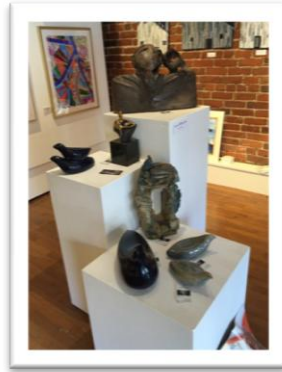
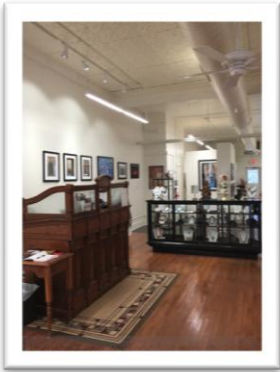
- Lucille Johnson Perkins Representative
- Lucille Johnson Perkins Firm

The applications must be submitted by July 10, 2017.  
All materials are located on the corporate website [ewiconnect.com](http://ewiconnect.com)



## MAY 2017 CHAPTER EVENT

EWI of Des Moines' May event was held in Valley Junction at Artisan Gallery 218. Here are some pictures from their website that we have permission to share. This is a women-owned fine art gallery, supporting the work of Iowa Artists.



## FIRMS IN THE NEWS

### **United Way recaps community impact, recognizes volunteers**

United Way of Central Iowa celebrated its successes and recognized individuals and organizations who are making a difference in the community today at its annual Live United luncheon.

Give Awards: Delta Dental of Iowa, Shazam, Meredith Corp.

Volunteer Awards: Delta Dental of Iowa, ITA Group, Wells Fargo. *Business Record*

### **Partnership pushes for local spending**

The Greater Des Moines Partnership wants you to buy local as part of National Small Business Week which is part of the U.S. Small Business Administration's observance through May 6. The Partnership said its Look Local First Initiative fits right in. The SBA reports that the nation's 28 million small businesses account for 54 percent of all U.S. sales. They provide 55 percent of all jobs and have accounted for 66 percent of all new net jobs since the 1970s. The Partnership reported that shifting just 5 percent of spending to local vendors could generate an economic impact of more than \$1 billion for Des Moines. *Business Record*

### **Delta Dental of Iowa giving topped \$2.5 million in 2016**

Delta Dental of Iowa benefited Iowans' oral health and overall health by contributing more than \$2.5 million throughout Iowa in 2016 through its foundation and philanthropic giving. The Delta Dental Foundation and Public Benefit Program contributed to oral health education programs for children and aging Iowans and to loan repayment programs for dentists in rural areas, and supported community water fluoridation and increased access to dental care for underserved Iowans. Delta Dental's annual giving reached every county in the state. This year, Delta Dental and Variety – the Children's Charity of Iowa have partnered to support the Kids on the Go program. Delta Dental has provided \$5,000 to Variety, and employees will provide items to be donated and assemble bikes for Kids on the Go. Each year, 100 percent of Delta Dental of Iowa employees participate in a volunteer project, CEO Jeff Russell said. *Business Record*

## 2017 LUNCH BUNCH

### 3<sup>RD</sup> TUESDAY & FOLLOWING THURSDAY OF EACH MONTH WEST DES MOINES & DOWNTOWN LOCATIONS

Date 11:30 am	West Des Moines Meets on <b>Tuesdays</b>	Downtown Meets on <b>Thursdays</b>
June 20 & 22	<u><a href="#">Coach's Pizza</a></u> 560 S. Prairie View, WDM 223-2233	<u><a href="#">Café Baratta's in the Historical Building</a></u> 600 E. Locust Street, D.M. 281-3294
July 18 & 20	<u><a href="#">Bar Louie</a></u> 7105 Mills Civic Parkway, WDM 422-9640	<u><a href="#">Tacopocalypse</a></u> 407 E. 5 <sup>th</sup> St., D.M. 556-0571
August 15 & 17	<u><a href="#">Wellman's</a></u> 597 Market Street, WDM 222-1100	<u><a href="#">Magnolia Wine Kitchen</a></u> 313 E. Locust Street, D.M. 635-0952
September 19 & 21	<u><a href="#">Bravo</a></u> 120 S. Jordan Creek Parkway, WDM 225-0660	<u><a href="#">Guru BBQ</a></u> 300 W. MLK Jr. Pkwy., D.M. 777-2500
October 17 & 19	<u><a href="#">Urban Grill</a></u> 3651- 86 <sup>th</sup> Street, Urbandale 278-1016	<u><a href="#">+39</a></u> 1430 Locust St., D.M. 421-4500
November 21 & 16	<u><a href="#">Waterfront</a></u> 2900 University Avenue, WDM 223-5106	<u><a href="#">Centro</a></u> 1003 Locust St., D.M. 248-1780
December 19 & 21	<u><a href="#">Club Car</a></u> 13435 University Avenue, Clive 226-1729	<u><a href="#">Court Avenue Brewing Company</a></u> 309 Court Avenue, D.M. 282-2739



Find EWI Des Moines on Facebook

## CALENDAR OF EVENTS

**Tuesday, June 20 – Lunch Bunch West**

11:30 a.m. – 12:30 p.m. Coach’s Pizza – 1250 - 560 S. Prairie View, West Des Moines– 223-2233

**Thursday, June 22 – Lunch Bunch Downtown**

11:30 a.m. – 12:30 p.m. Café Baratta’s in the Historical Building – 600 E. Locust Street, Des Moines – 281-3294

**Friday, May 26 – Reservation Deadline for June Meeting**

Make sure to register for the April meeting at [www.ewidsm.org](http://www.ewidsm.org). Questions about payments? Please contact Marla Wylie at [mwylie@deltadentalia.com](mailto:mwylie@deltadentalia.com) or 263-2802.

**Future EWI of Des Moines event to put on your calendar**

**Monday, July 10, 2017** Iowa Event Center – Business Meeting

## HAPPY BIRTHDAY!!

Katherine McClure	Katherine McClure Photography	June 11
Mary Granneman	Chapter Life Member	June 15
Beth Kneeskern	KPMG	June 16

## THANK YOU

Your kind expression of sympathy is gratefully acknowledged and deeply appreciated.



*The Family of Joe Kirk, Sr.*

*Friends in EWI,  
Thank you for the beautiful basket of flowers sent for my friend Joe's funeral. He always enjoyed our golf outings and commented that he had never seen such a close-knit group of women. Although Joe and I never married, we were together for many years and he was a huge part of my life and I thank you for acknowledging that. Judy Smith*

## GRAND VIEW ACCREDITED TO OFFER ONLINE EDUCATION, LAUNCHES GV ONLINE

The Higher Learning Commission (HLC) has approved Grand View University full rights to offer quality online classes in order to meet the needs of their student population. The new approval accredits the university to offer online education in courses and programs, meaning that students are now able to complete some degrees entirely online. Beginning in the fall of 2017, GV Online will offer both bachelor's and master's degree programs.

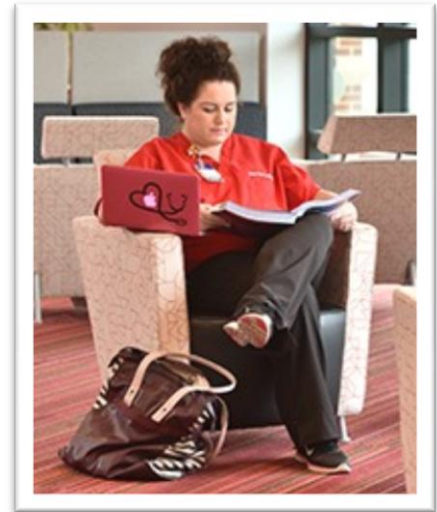
The approved online programs are:

### **Bachelor's degree:**

- Nursing RN to BSN
- Business Administration (Management and HR Concentrations)
- Political Studies
- Paralegal Studies
- Theology
- User Experience (Certificate Program)

### **Master's degree:**

- MS in Nursing
- MS in Organizational Leadership



Grand View has also received Iowa Board of Nursing (IBON) acceptance of all changes proposed in RN to BSN and MSN curriculum and delivery mode.

“Demand for online education has been growing nationally and at Grand View,” said Kent Henning, Grand View University president. “We are pleased to have Grand View’s programs meet the standard of excellence set by the Higher Learning Commission,” he added.

“This is important for students who cannot otherwise attend scheduled classes,” said Patty Williams, Dean, Graduate and Adult Programs. “There are many reasons students need to pursue their education online, whether it’s work or family commitments. This enables Grand View University to offer students an opportunity to continue their education no matter the circumstances. The quality of our online education courses has been recognized with this approval.” More information about GV Online.

The HLC accredits degree-granting post-secondary educational institutions in the North Central region of the United States. The Higher Learning Commission (HLC) is an independent corporation that was founded in 1895 as one of six regional institutional accreditors in the United States. For more information, please visit the HLC website at <http://www.hlcommission.org>. *GrandView University Website*





## September 21–23, 2017 LEADERSHIP CONFERENCE & ANNUAL MEETING

Grapevine, TX (Dallas Area)

\$575 - Early Bird Registration - until June 15  
 \$625 - Regular Registration - June 16–Aug 15  
 \$700 - Late/On-site Registration - Aug 16–Sept 21  
 \$100 - Leadership Caucus

### 2017 LCAM SCHEDULE AT A GLANCE

#### Wednesday, September 20

Arrive at Conference – Travel Day

**12:00 pm - 9:00 pm** -LCAM Registration in *Lobby Foyer*

#### Thursday, September 21

**7:00 am – 7:30 am** - LCAM Registration in *Lobby Foyer*

**7:30 am – 9:30am** -Opening Breakfast and Keynote Presentation

Eileen McDargh

<http://www.EileenMcDargh.com>

**9:45 am – 12:00 pm** - Leadership Caucus - Training for Chapter Leadership

OR

**9:45 am – 11:30 am**- Break Out Education Sessions  
*Social Media | Chapter Operations | Keynote Speaker*

**12:00 pm – 1:30 pm** Awards Luncheon

**2:00 pm to 3:45 pm** - Leadership Caucus cont. with Group Photo and Headshots

OR

**2:00 pm to 3:45 pm** - Breakout sessions repeated

**4:00 pm to 5:00 pm**- Town Hall Meeting with Membership

**6:30 pm to 10:00 pm**

Texas Chapter's Social Event – Not included in LCAM registration – More Details to Come

#### Friday, September 22

**7:00 am – 7:30 am** – Registration in *Lobby Foyer*

**7:30 am – 9:15 am**–Breakfast & Plenary Session

Dr. Courtney Baker

[www.courtneybaker.com](http://www.courtneybaker.com)

#### Friday, September 22 (continued)

**9:30 am – 12:00 pm** - Academy of Leadership Module

“Professional and Volunteer Leadership: Thinking Like A Genius” with Presenter Lori Giovannoni

OR

Academy of Leadership Alumni Experience

**12:15 pm – 1:30 pm** - Scholarship/Literacy Luncheon

**1:45 pm – 4:30 pm**- AOL & Alumni Experience continued

**4:30 pm – 5:00 pm**- AOL Graduation Ceremony

**5:00 pm – 6:00 pm**- Chapter Photos

**6:15 pm – 10:00 pm**

Chapter Night - On Your Own to Shop, Sight See, Eat & Relax

#### Saturday, September 23

**7:00 am – 9:00 am**- Continental Breakfast

**7:30 am – 8:00 am** - Delegate/Alternate Delegate Registration

**8:00 am – 8:30 am** - Rehearsal for Annual Meeting (Tellers, Timekeepers, etc.)

**9:00 am – 11:30 am** - Annual Meeting & 2017-2018 Corporate Board Installation

**11:30 am – 12:15 pm** - Chapter Photos

**12:15 p.m. – 2:00 pm** - Closing Luncheon

## EWI Board / Committee Assignments 2016-2017

<p><b><u>Advisor</u></b> Carmella Heckard</p> <p><b><u>Official Greeter</u></b> Tara Nagel</p> <p><b><u>Nominating</u></b> Carmella Heckard Tara Nagel Kat McClure</p> <p><b><u>Budget</u></b> Jessinda Madonia Tara Nagel Kat McClure</p> <p><b><u>Bylaws</u></b> Carmella Heckard Tara Nagel Kat McClure</p> <p><b><u>Investments</u></b> Chris Harvey - Chair Tara Nagel Paula Leverenz – non EWI Donna Schletzbaum – non EWI Michelle Morris – non EWI</p> <p><b><u>Philanthropy</u></b> Deb Longseth -Chair Laura Montgomery Marty Kennedy Judy Jones Deanne Monson Laveta Pfaltzgraff</p> <p><b><u>Scholarship/ASIST</u></b> Sarah Roeder – Chair Michelle Cook Gloria Criswell Donna Schletzbaum – non EWI Michelle Morris – non EWI Paula Leverenz – non EWI</p>	<p><b><u>Past Presidents Advisory Council</u></b></p> <p>Carmella Heckard Chris Harvey Paulette Schultz Christine Healy Barbara Eslick Cindy Fleischacker Michelle Cook Sarah Roeder Ruth Hanrahan Sheryl Nichols Laveta Pfaltzgraff Kim Fankhauser Judy Jones Judy Smith Linda Buchanan Marsha Rodd Mary Granneman Nancy Cook Karen Bailey Janette House Lena Rocha</p> <p><b><u>Hospitality</u></b> (reports to Program) Keisha Knepper – Chair Marsha Rodd Linda Buchanan Sharon Porter Julie Mapes</p> <p><b><u>Purely Social</u></b> (reports to Program) Karen Fitch-Chair Barb Hobson Christy Jones Ruth Hanrahan Carol Bahls</p> <p><b><u>Parliamentarian</u></b> Nancy Cook</p> <p><b><u>Lunch Bunch</u></b> Judy Smith – WDM Paulette Schultz - Downtown</p>	<p><b><u>Fundraising**</u></b> Cindy Fleischacker – Chair Judy Smith Debbie Belieu Paulette Schultz Kim Bence Corinna King Debra Lyons</p> <p><b><u>Communications**</u></b> Christine Healy – Chair Aisha Syed Jana Morgan Robin Taylor Kim Crocker Anna Doud</p> <p><b><u>Program**</u></b> Courtney Hill-Co-Chair Cyndi Lorenzen – Co-Chair Kim Fankhauser Mary Ann Moore Lena Rocha</p> <p><b><u>Recruitment/Retention**</u></b> Karen Andersen – Chair Sheryl Nichols Karen Bailey Mary Granneman Janette House</p> <p><b><u>Marketing**</u></b> Sharon Porter - Chair</p> <p><b><u>Sergeant at Arms**</u></b> Marla Wylie</p> <p><b><u>Treasurer**</u></b> Jessinda Madonia</p> <p><b><u>Secretary**</u></b> Beth Kneesern</p> <p><b><u>Vice President**</u></b> Kat McClure</p> <p><b><u>President**</u></b> Tara Nagel</p> <p><b>** Board Member</b></p>
--	--	--

## CORPORATE INFORMATION

### What is EWI?

#### Mission

Executive Women International (EWI) brings together key individuals from diverse businesses for the purpose of promoting member firms, enhancing personal and professional development, and encouraging community involvement.

#### Vision

To be a global women's organization of 5,000 engaged members empowering others for positive change.

#### Values

Integrity | Excellence | Respect | Collaboration



**ewi** PROFESSIONAL DEVELOPMENT  
**WEBINARS**

### Burn Bright, Not Out

Presenter: Carolyne Simi

Tuesday, June 6, 2017

3:00 PM EST / 12:00 PM PST

In order to be truly happy with what we're doing, no matter what it is, it's crucial to answer these 5 questions: who are you, what do you want, what do you have to offer, how do you want to contribute and how will that end result enhance your life overall? By focusing on your own brilliance, you can crystalize your personal vision of success and create a life you cherish. The participants will learn three tools that will allow them to make smart, well informed career decisions with their own best interest in mind.

- Connect with your priorities – what's important to you
- Connect with your strengths – what's your super-power
- Connect with your skills and interests – what lights you up

**Carolyne Simi** – Founder and CEO of Create Your Encore – is a Career Transformation Specialist who coaches and guides those who are no longer happy with their career and are unsure of their next step. She helps them transform their career and move into that change with ease.

Satisfied clients rave about the powerful impact Carolyne has with her ability to help them gain clarity about the career they really want and to discover the essential building blocks for creating that lifestyle. They learn how to honor their passions, values, skills, talents and gifts and harness that power to design and create a career that brings them fulfillment, meaning and joy.

Create Your Encore is quickly becoming the most actionable career transformation program for adult professionals. At the core of Carolyne's programs are the combination of education, wisdom and leadership, directed at helping clients convert their ideas into a plan, stay on track and make it happen.

Carolyne is a multi-talent, bringing her Certified Coaching skills and 40 years of Project Management expertise in the corporate arena to this work. Having tried a number of different business ideas to find her own calling, she is the living example that you really can deliberately create the life you love.

### 2016-2017 Corporate Officers & Directors

#### President

Jill Gaffney  
Greenleaf Landscaping, Inc.  
EWI of Spokane

#### President-Elect

Cheryl Hawkins  
American Clinical Laboratory  
Assn  
EWI of Washington, D.C.

#### Secretary/Treasurer

Christine Healy  
TPI – The Printer Inc.  
EWI of Des Moines

#### Directors

Darlis Vauble  
WoodmenLife  
EWI of Omaha

Christina Casiano  
Bill Miller Bar-B-Q  
Enterprises, Ltd.  
EWI of San Antonio

Kim Weprin  
Associate Integrated Marketing  
EWI of Wichita

#### Advisor

Dianne Luckett  
Irby Electrical Distributor  
EWI of Jackson

**EWI® Des Moines Chapter  
Monday, June 5, 2017  
Chapter Meeting**

<b>Date:</b>	Monday, June 5, 2017
<b>Program:</b>	Firm night featuring TPI – The Printer Inc
<b>Program Location:</b>	Louie's Wine Dive 4040 University Avenue, Des Moines Phone: 515.777.3416
<b>Schedule:</b>	4:15 – 5:15 Board Meeting 5:15 - 6:15 Socialize/order dinner – Cash Bar available 6:15 - 6:45 Firm Presentation: TPI – The Printer Inc 6:45 – 7:00 GrowthZone presentation 7:00 - 7:15 EWI Updates
<b>Menu:</b>	<b>Choose from 1 of 3 entrée choices:</b> 1) Champagne Fish & Chips (gluten free) - champagne and rice flour battered cod, kohlrabi slaw, Louie’s dressing. Served with fries. 2) Gourmet Sinatra Burger – hand-pattied certified angus beef, bacon, cheddar, balsamic, tomatoes, green goddess dressing, brioche bun. Served with fries or quinoa salad. 3) Diablo (can be gluten free) – penne pasta, creamy arrabbiata, fresh herbs, green onions, lime sour cream. Served with focaccia. <b>Dessert:</b> chocolate torte (gluten free) – nutella cocoa, rum butter, cinnamon, whipped cream <b>Beverages:</b> water and iced tea. Other beverages are available for purchase.
<b>Cost:</b>	\$25.00
<b>Dinner Reservation Deadline:</b>	<ul style="list-style-type: none"> <li>• <b>Reservation deadline is Friday, May 26, 2017.</b></li> <li>• <b>Please remember that all Representatives <i>MUST</i> register on line at <a href="http://www.ewidsm.org">http://www.ewidsm.org</a>.</b></li> <li>• Representatives paying monthly or quarterly <b><i>MUST</i></b> complete the form below and mail it along with your check to Marla Wylie <u>by</u> the reservation deadline.</li> <li>• Representatives bringing a guest <b><i>MUST</i></b> register the guest online and mail the payment to Marla by the reservation deadline.</li> <li>• <b><i>Cancellation Policy:</i></b> If you have registered but are unable to attend, you <b><i>MUST</i></b> notify Marla before the reservation deadline in order to receive a refund or credit.</li> </ul>
<b>Mail this form to:</b>	Marla Wylie Delta Dental of Iowa 9000 Northpark Drive, Johnston, Iowa 50131 515-261-5504 <a href="mailto:mwylie@deltadentalia.com">mwylie@deltadentalia.com</a>

Firm: \_\_\_\_\_

Representatives: \_\_\_\_\_

Executives/Guests: \_\_\_\_\_

Amount Enclosed: \_\_\_\_\_ (Please make check payable to EWI)